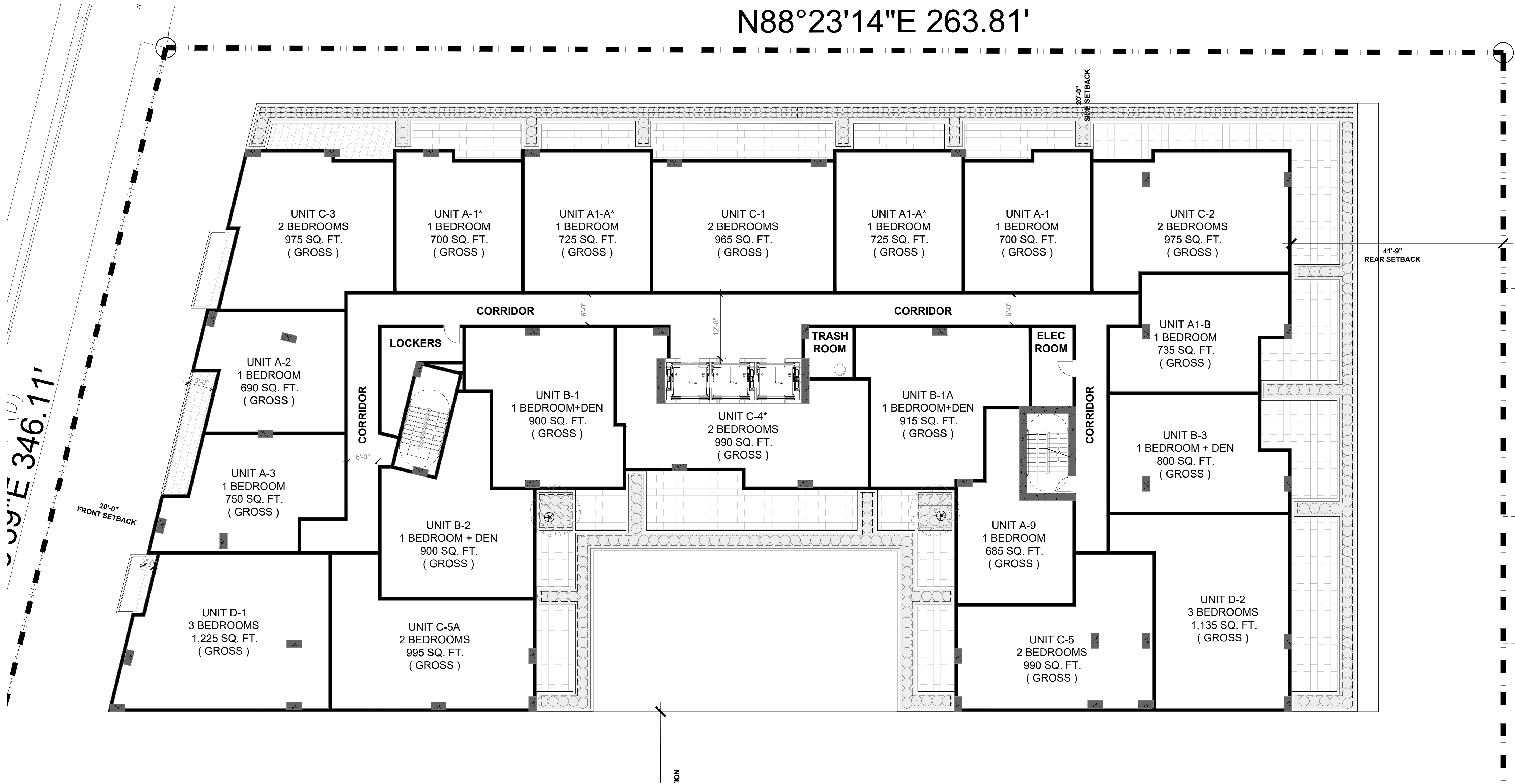


N88°23'14"E 263.81'



absolute-idea.com
CANAL PARK
3323 NE 163rd Street, Suite 200 North Miami Beach, FL 33160
☎ 305.792.0015 ☎ 305.931.0279 ✉ info@absolute-idea.com

SEAL
KEN GARDNER
FLA 1589
TO THE BEST OF MY KNOWLEDGE, THE PLANS AND SPECIFICATIONS COMPLY WITH THE CITY OF MIAMI'S ORDINANCES AND THE FLORIDA PROFESSIONAL ENGINEERING ACT AND THE FLORIDA PROFESSIONAL ARCHITECT ACT.

Professionals

REV.	DATE	DESCRIPTION
01	XX-XX-2024	D.R.C SUBMITAL

ALL MEASUREMENTS MUST BE VERIFIED BEFORE BEGINNING THE WORKS. NO MEASUREMENTS ARE TO BE SCALED DIRECTLY FROM THIS DRAWING.

Key section

Client
VERA FUND
NICK POLYUSHKIN
& YURI KHARITONENKOV
TEL: 305.833.3303

Project
**1600 S FEDERAL HIGHWAY
(MIXED-USE PROJECT)**
1600 SOUTH FEDERAL HIGHWAY,
POMPANO BEACH, FL 33062

Title IRRIGATION PLAN 4TH - 6TH FLOOR			
Drawn GSLA	Field LANDSCAPE ARCH		
Verified KG	Scale as shown		
Approved KG	Date 10-09-2024		
Project Manager KG		Dwg. no. L-305	
Project 24-838			

PZB

PZ24-12000027
06/24/2026

IRRIGATION PLAN - 4TH-6TH FLOOR

SCALE: 1" = 10'